

Installation manual

LIFT height adjustment device

The versatile height adjustment device *LIFT*, made of galvanised steel, is designed for rapid and easy adjustment of decking substructures and subsequent adjustment through board joints of decking elements. *LIFT* can also be used as a connection element for SS squared timbers.



IMPORTANT!

Thanks to your decision for the **REIF ■ WoodLink** wood connection system, you have decided to use a proven and extremely durable system. Wood is a natural product that has a life of its own. It is therefore very important, before starting to lay the boards, that the conditions are optimally prepared and that laying is carefully implemented.

We have summarised what you need to pay attention to during preparation and how to proceed during laying in the following installation manual.

The essential requirement for a durable wooden decking is the correct

The manual is also available under www.reif-woodlink.de



wood moisture. You must obtain information about this point from your wood retailer. Don't worry, the manual is much easier than it looks. Take the time to read the manual carefully; you will more than gain back the time you needed to read it.

We wish you all the best during your installation and many years of pleasure in your new wooden decking.

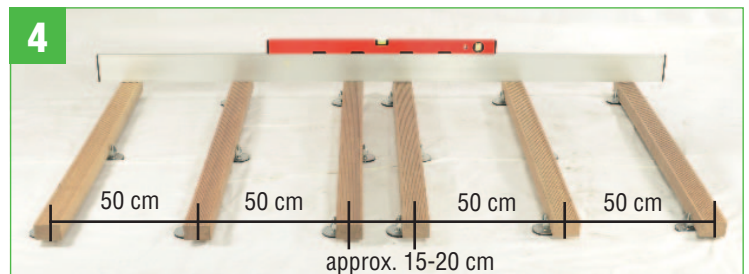
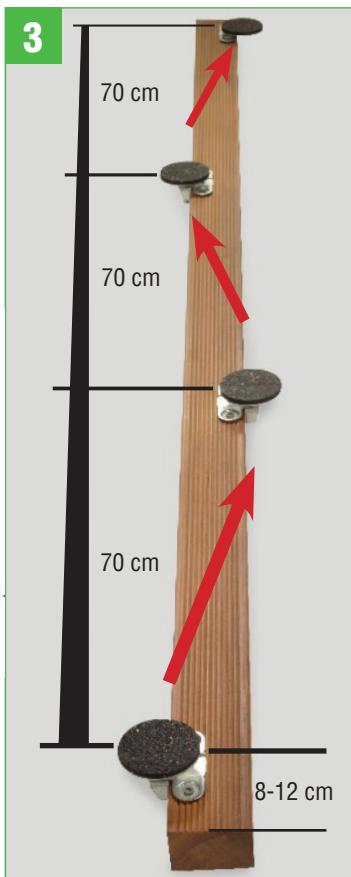
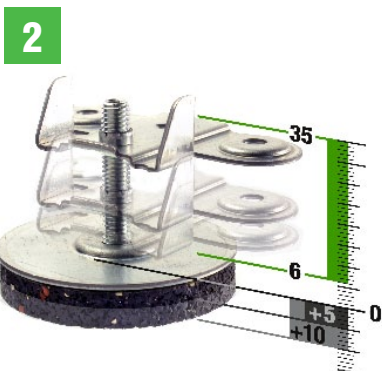
Your **REIF ■ WoodLink team**

Tools



- Moisture measuring device (optional)
- Screwdriver
- Bit with extension (TX 20 or TX 25)
- Spirit level
- Allen key
- Hex bit (optional)
- Measuring stick
- Pencil

Preparation



The following must be checked as an essential requirement for a durable wooden decking:

- **Particularly important!** The correct wood moisture (this information **must be obtained** from your wood retailer). The use of a moisture measuring device is recommended. (Fig. 1)
- The correct wood properties (e.g. sapwood, cracks, resin bleed, spiral grain, etc.)
- The correct substructure (SS)
- Prepared and solid substrate (crushed rock or concrete panels, etc.)
- Load-bearing SS material (if using wood: SS resistance class => board resistance class)
- Adjustment height: 6-35 mm with-

out anti-slip pad (*LIFT-PAD*), load-bearing up to approx. 500 kg / m² (Fig. 2)

- The devices should be installed in an alternating pattern on each side of the squared timber in the SS.
- The centre distance from the last *LIFT* unit from the squared timber end should be 8-12 cm.
- Centre distance from *LIFT* to *LIFT* on the squared timber should be max. 70 cm. (Fig. 3)
- Distance from squared timber centre to squared timber centre should be max. 50 cm (Fig. 4)

Attachment on the substructure



5

- The LIFT device must be positioned with both contact brackets on a lower squared timber edge 8-12 cm away from the end of the squared timber.
- The LIFT device must be fastened to the lower side of the SS squared

timber with the provided TX screw. If wood species subject to significant splitting are used, it is recommended that the SS squared timber is pre-drilled at the end of the squared timber (pilot borehole diameter approx. 2 mm smaller than the screw

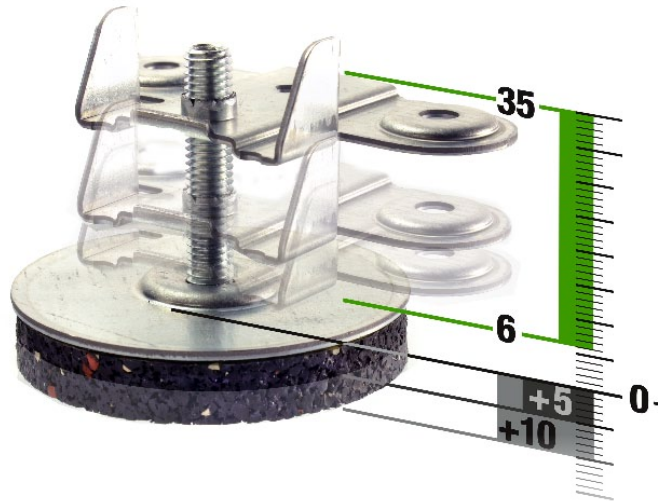
diameter). (Fig. 5)
The provided Allen key can now be used to set the required height adjustment of the SS. Ensure that the LIFT discs are fully flat with the substrate.

When using a LIFT-PAD



6

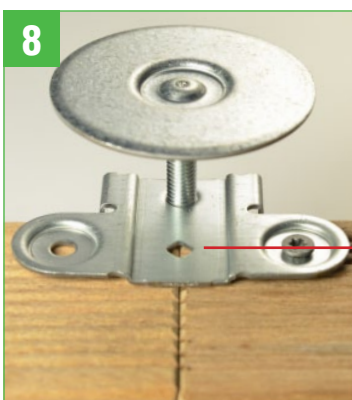
- When using a LIFT-PAD, glue the pad flush with the metal disc after installation. (Do not exceed PAD height of max. 2 x 10 mm) (Fig. 6)
- ATTENTION:** if necessary, remove any oil from the contact surface of the LIFT-PAD before gluing it



7

- If the LIFT is attached to the squared timber between the visible joints, the provided Allen key can be used to implement the height adjustment directly. (Fig. 7)
- This applies in particular to the construction of decking elements.

Squared timber extension

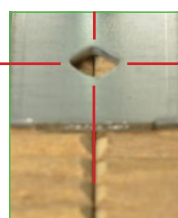


8

- LIFT device must be positioned and fastened to one end of the squared timber using the SS sight. (Fig. 8)
- If wood species subject to significant splitting are used, it is recommended that the SS squared

timber is pre-drilled at the end of the squared timber (pilot borehole diameter approx. 2 mm smaller than the screw diameter).

- Attach the other squared timber flush to the face end and fasten in place with the TX screws.



SS sight

REIF WoodLink®

BEFESTIGUNGSSYSTEME



■ STANZWERK REIF GmbH

Heinrich-Heine-Straße 32
72555 Metzingen, Germany

Tel.: +49 (0) 71 23 94 30 83
Fax: +49 (0) 71 23 94 31 38

www.reif-woodlink.de
info@reif-woodlink.de

Status: 06/2014 – Subject to modifications without prior notice.